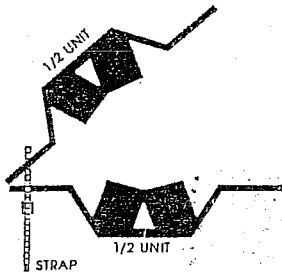


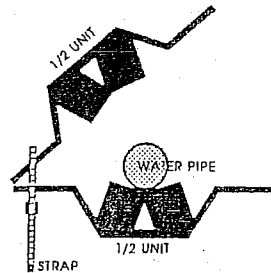
# MAGNETIZER®

## R-2 & MO-B • RESIDENTIAL POOL & SPA ENERGIZER SYSTEMS INSTALLATION INSTRUCTION SHEET ©1994

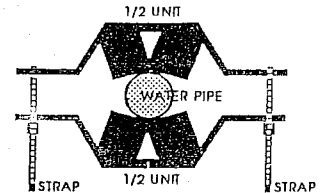
### INSTALLING THE R-2 & MO-B POOL & SPA UNITS



Step one- align the holes at one end of the two unit halves and insert the strap through the holes pulling the end through the fastening device on the strap. Do not tighten but leave approximately a 1 inch loop in the strap.

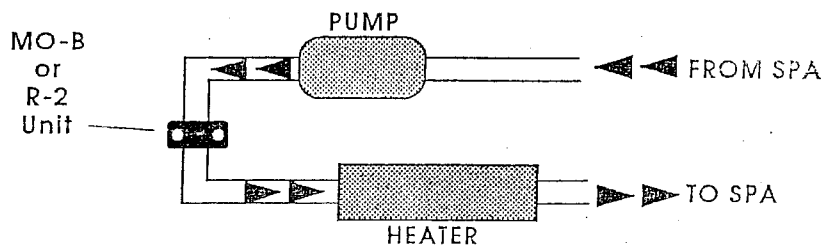


Step two- locate the place on the water pipe you are going to install the unit. Cradle the water pipe in the natural cavity of the unit, as shown above.



Step three- pull the two halves together and align the other two holes inserting the other strap through the holes repeating the same procedure as in step one. Now you can tighten both straps.

### INSTALLATION PLACEMENT FOR THE RESIDENTIAL SPA SYSTEM

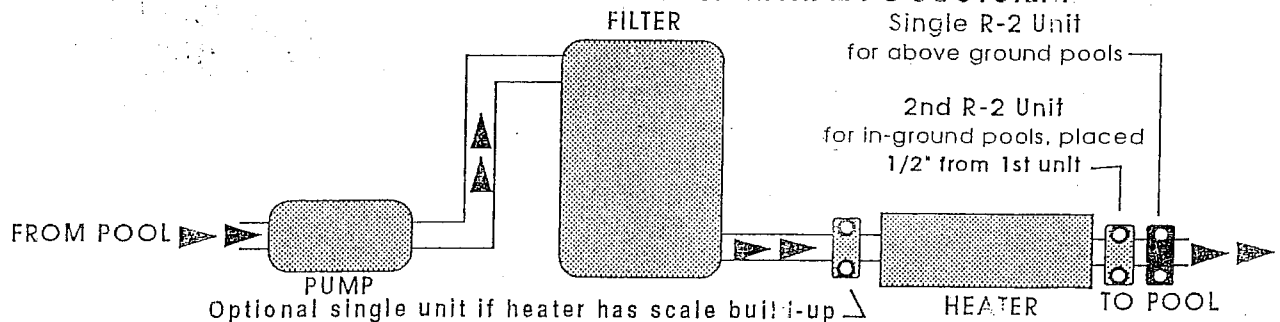


ALWAYS PLACE SPA UNIT ON THE RETURN LINE BEFORE THE HEATER AS SHOWN

Remove spa panel to expose spa pack (piping, pump & heater). Place Spa System on the return line after the pump and before the heater. See above illustration.

**NOTE:** MO-B System is used for personal spas (600 gal. or less) while the R-2 System is used for commercial size spas (over 600 gal.)

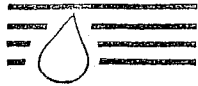
### INSTALLATION PLACEMENT FOR THE RESIDENTIAL POOL SYSTEM



ALWAYS PLACE POOL UNIT OR UNITS ON THE RETURN LINE AFTER THE FILTER & BEFORE HEATER AS SHOWN

1. On above ground swimming pools use a single R-2 System on the return line after the filter and heater (if one is installed), as shown above.
2. On in-ground swimming pools use an R-2 Tandem System after the filter and Heater (if one is installed). It is required to place the units 1/2" apart for maximum power. A single optional R-2 System is installed before the heater if there is persistent scale build-up in the heater.

Contact Your Dealer For Commercial Size Pools & Spas



# MAGNETIZER™

## MAGNETIZER SWIMMING POOL

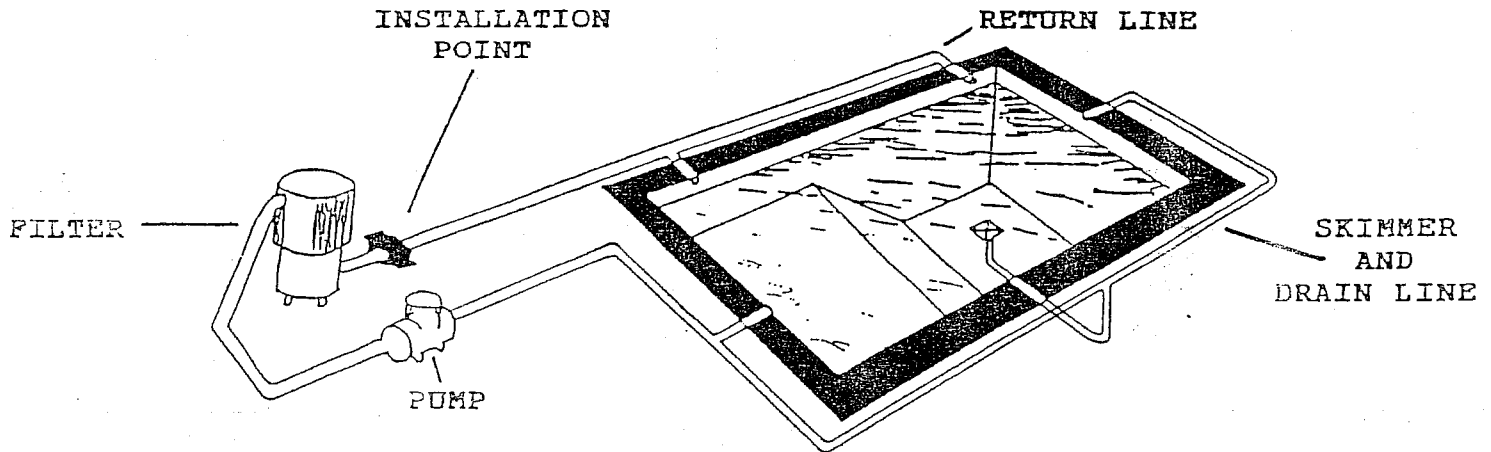
Model - R2 (1½"-2½" return line)

SAVE MONEY

### BEHAVIOR

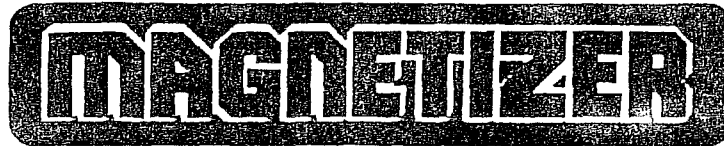
1. Will reduce chemical needs approximately 50 - 60% by creating an almost perfect chemical mixture making the best and full use of the chemicals. No more dense and/or sparse mixing.
2. Will neutralize and maintain a balanced pH as part of the chemical-reduction factor.
3. Will remove and further prohibit algae growth by dissolving the corrosion constituents necessary for algae life support.
4. Will dissolve and remove scale corrosion and green acid stains.
5. The chlorine and other chemicals do not seem to irritate swimmers anymore. Less eye burn, less skin burn - BETTER SWIMMING.

### SATISFACTION GUARANTEED OR YOUR MONEY BACK



Always install on the return line

LESS CHEMICALS - BETTER SWIMMING!



## Pool & Spa Energizers

**INSTALLATION:** The MAGNETIZER Pool Energizer is simply strapped around the return line after filter, pump, and heater. The MAGNETIZER Spa Energizer is installed on the line just before the heater.

### Use of Chemicals:

**Chlorine or other sanitizers:** Residential pools - .4 - .5 parts per million  
Commercial pools - must be at least 1.0ppm or as required by the health department.

**Most other chemicals:** Most other chemicals will not be necessary. If other chemicals are used, such as pH stabilizers, start with 1/2 the normal amount and wait for 24 hours to allow a reaction before using more. In many cases you will find you are able to use less than 1/2 the normal amounts of most chemicals.

### Scenario of pool/spa events

- Day 1:** On spa applications the "bath tub ring" will start to dissolve within 5 minutes of running the pump and the pH will usually rise (if below 7.0) and the water will feel silky. Watch filter pressure since "MAGNETIZER" will start to coagulate solids, minerals, algae, etc. that are in the water allowing them to be filtered out. This may plug up a dirty filter. If filter pressure rises, backwash or remove and clean the filter.
- Day 2:** Backwashing or filter cleaning may again be necessary if filter pressure is above normal.
- Day 3:** Scale and calcium will start to dissolve and return to suspension in the water. This may cause a period of cloudy water for one or two days. You may shock the water if you are in a hurry to use or simply wait for the enhanced filtration of the "MAGNETIZER" Pool or Spa Energizer to clarify the system.
- Day 7:** Backwash or clean the filter and reduce the sanitizer (chlorine/bromine) feed rate by about one third.
- Day 14:** Most chemicals can be discontinued except for one half the normal rate of sanitizer. You will notice improved water clarity and reduced chemicals odors, less eye irritation and skin drying. The water will feel soft and silky.

## SPECIFICATIONS

MODEL	PIPE SIZE (inches)	APPLICATION
M-O-B	1.0 - 2.0	Personal or commercial spas of up to 600 gallons.
R-2	1.5 - 2.75	Private in-ground spas, commercial size spas, and above ground residential pools.
R-2 T/S	1.5 - 2.75	In-ground residential pools (up to 50,000 gallons).

Larger sizes available to fit return line up to 16" - pricing available upon request.

## TANDEM SERIES

The "MAGNETIZER" R-2 T/S consists of a two unit system.  
They should be installed next to each other spaced 1/2" apart.

### THE MAGNETIZER GROUP, INC. ALSO MANUFACTURERS MAGNETIZER UNITS FOR:

#### WATER SYSTEMS:

- \* HOMES, APARTMENTS, MOTELS & HOTELS
- \* COMMERCIAL/INDUSTRIAL  
BOILERS, COOLING TOWERS & HEAT EXCHANGERS
- \* INDUSTRIAL HEATING SYSTEMS.  
HOME, FACTORIES & INDUSTRIAL HEATING SYSTEMS

#### FUEL ENERGIZERS (for saving gasoline, fuel oil, propane & natural gas):

- |         |               |         |
|---------|---------------|---------|
| * AUTOS | * TRUCKS      | * BOATS |
| * RV'S  | * MOTOR HOMES |         |